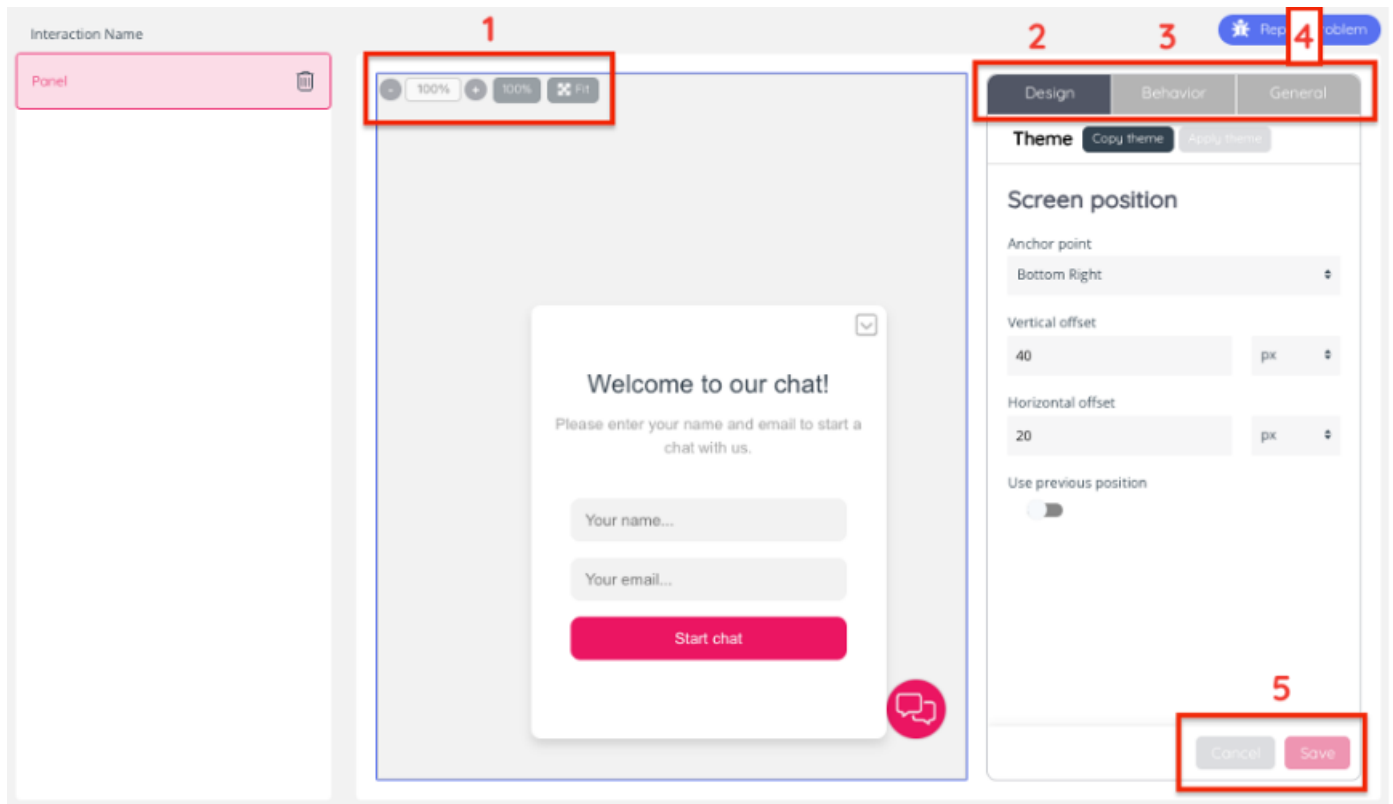


How to edit an interaction

After you have added an interaction, you will need to edit it according to your needs.

The interaction editing page is the following:



This page allows you to:

- (1) Set the size of the interaction or fit to screen.
- (2) Design: this pane has various design configuration options depending on the interaction type and element marked on the interaction.
- (3) Behaviour: this pane has various design configuration options depending on the interaction type and element marked on the interaction.
- (4) General: this pane is used for setting a name and description of the interaction.
- (5) Select the "Save" button to save your changes or click on "Cancel" to discard of the latest edits.

The panel to the centre allows you to preview the relevant edits.