

Installation

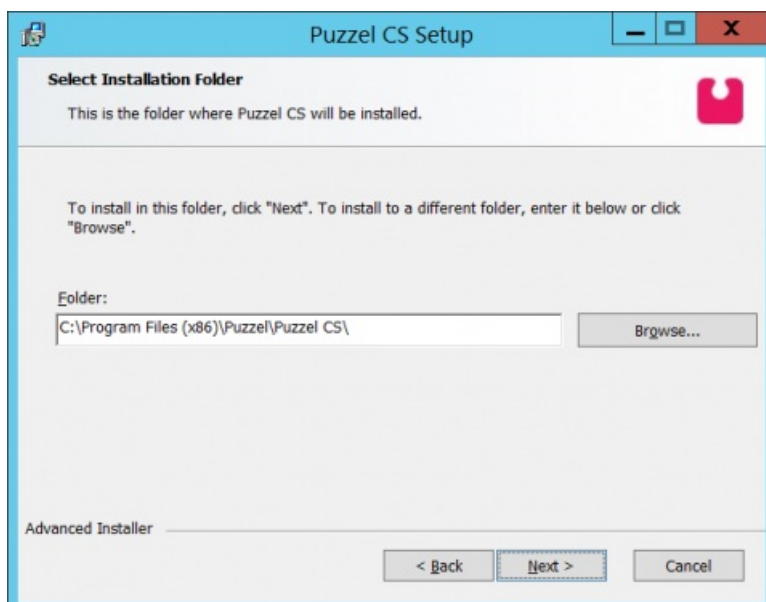
The Sync Client is installed through an .msi-file. This file installs a windows service that performs the actual synchronization as well as a configuration tool that allows the administrator to configure the service.

To do the installation:

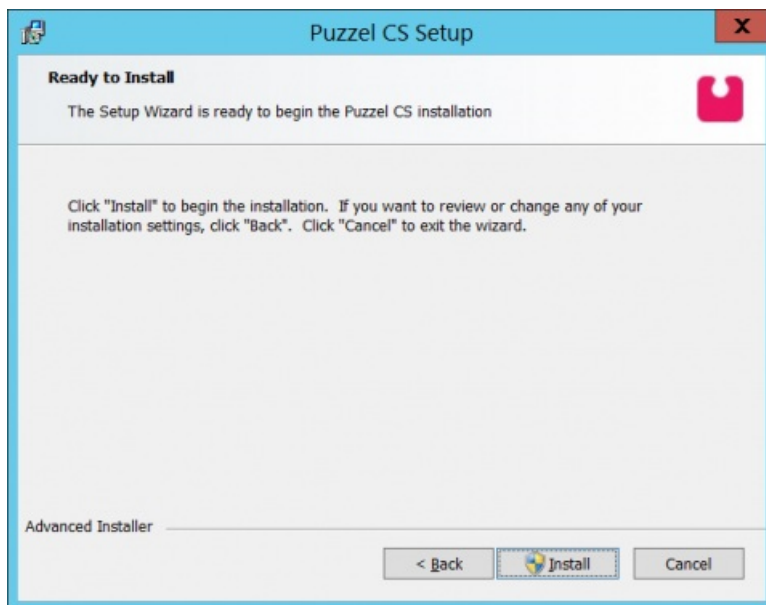
1. run the .msi-file and place the sync client files in an appropriate location.
2. After clicking on the .msi-file, click “Next” to start the installation.



3. Choose the installation folder and then click **Next**



4. Click **Install**



You may now be prompted by the operating system for if you want to install this software or not. Click “yes” to continue.

5. Click **Finish**



The sync client is now installed and ready to be configured.